

Battery Box in a compact design



Lithium- Battery Pack with a protection electronics (PCM single cells monitoring), Protects the battery against overcharge, deep discharge and short circuit always balanced cells.

Applications

Automotive
Industrial
Sport
Medical
and others



OEM / ODM service & customized logo available

Pack Specifications

Nominal Voltage	14.4 V
Capacity (Nominal)	15400 mAh
Energy	222 Wh
Weight	1560 grams
Size (L x W x H) mm	167 x 100 x 78.5 ±2

Operating Specifications

Operating Voltage	16.8 V to 12.0 V
Charge Voltage	(Max. 16.80 V)
Discharge End Volt.	12.0V
Operating Temperature: Discharge Charge	-20°C to 60°C 0°C to 45°C
Max Discharge Current	15 A (Continuous) 35 A (Peak)
Max Charge Current	15 A (Continuous)

Storage Specifications

Storage Temperature	1 year : -20~25°C(1*)
Relative humidity (45-75%)	3 months : -20~45°C(1*) 1 month : -20~60°C(1*)
Please refer to Page 2 of this document for Battery Pack discharge characteristics.	

Note (1): If the cell is kept as ex-factory status (50% of charge), the capacity recovery rate is more than 80%.

Standard charging method

0.5C CC (constant current) charge to 16.80V, then CV (constant voltage 16.80V) charge till charge current decline to ≤ 0.02C

Transportation

During transport, do not subject the cell(s) or the box (es) to violent shaking, bumps, rain and direct sunlight. Keep the cell(s) at a half-charged state.

Care and safety recommendations:

Never open, short circuit or put in fire. Do not install backwards. Avoid short circuit with metal objects.

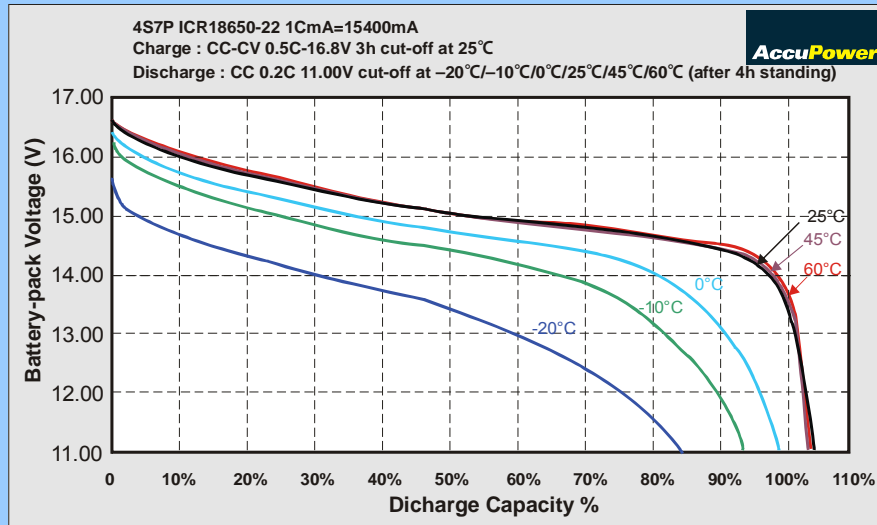
ATTENTION:

Improper handling may result in fire, personal injury or product failure due to leakage or Explosion. Use only the charger specified for this battery type. Improper use will reduce considerably the battery life. Please pay attention to following recommendations:

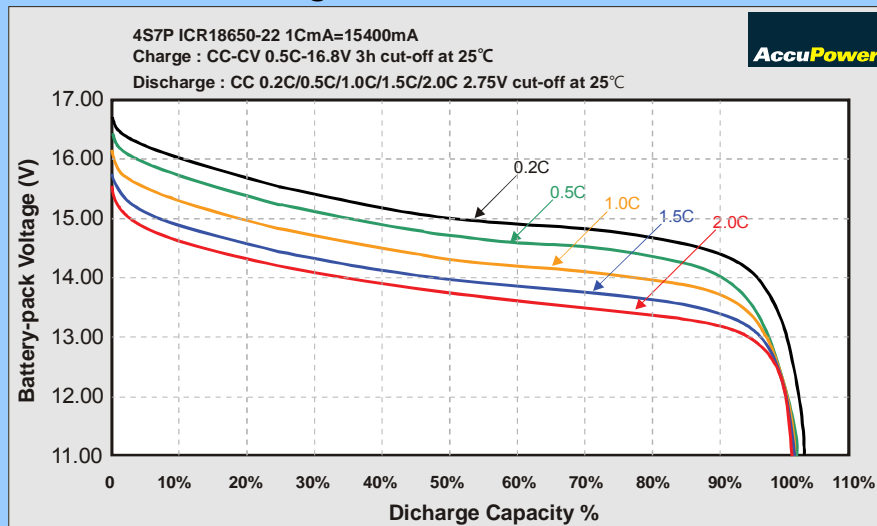
1. Always avoid Deep discharge of the battery
2. Charge the battery before longer Storage.
3. Use only the battery charger specified for this battery type.
4. Do not leave battery in charger over 24 hours.
5. Keep it in a cool and dry place.
6. Avoid exposure to high temperatures.
7. Do not disassemble or modify the battery, may cause the battery to generate heat, explode or ignite.
8. Dispose properly used batteries. Contact your city recycling coordinator. Thank you.

Electrical Characteristics

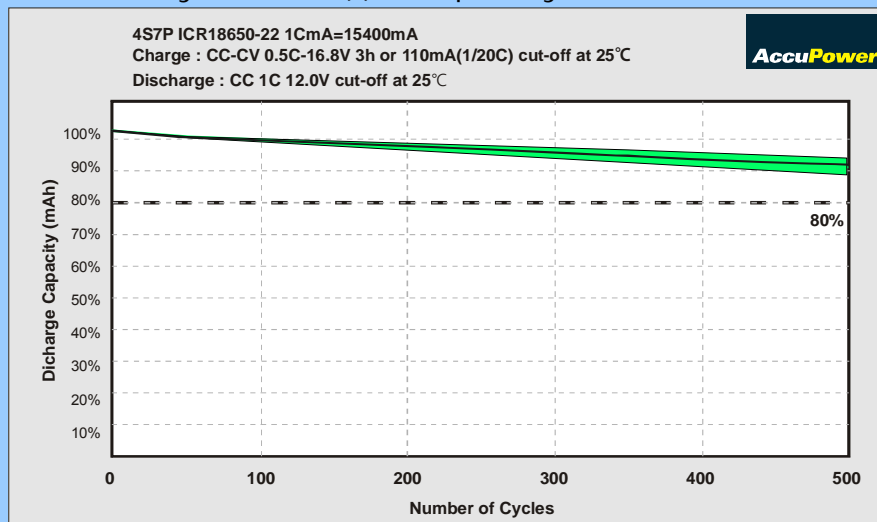
Discharge Temperature Characteristics



Discharge Rate Characteristics

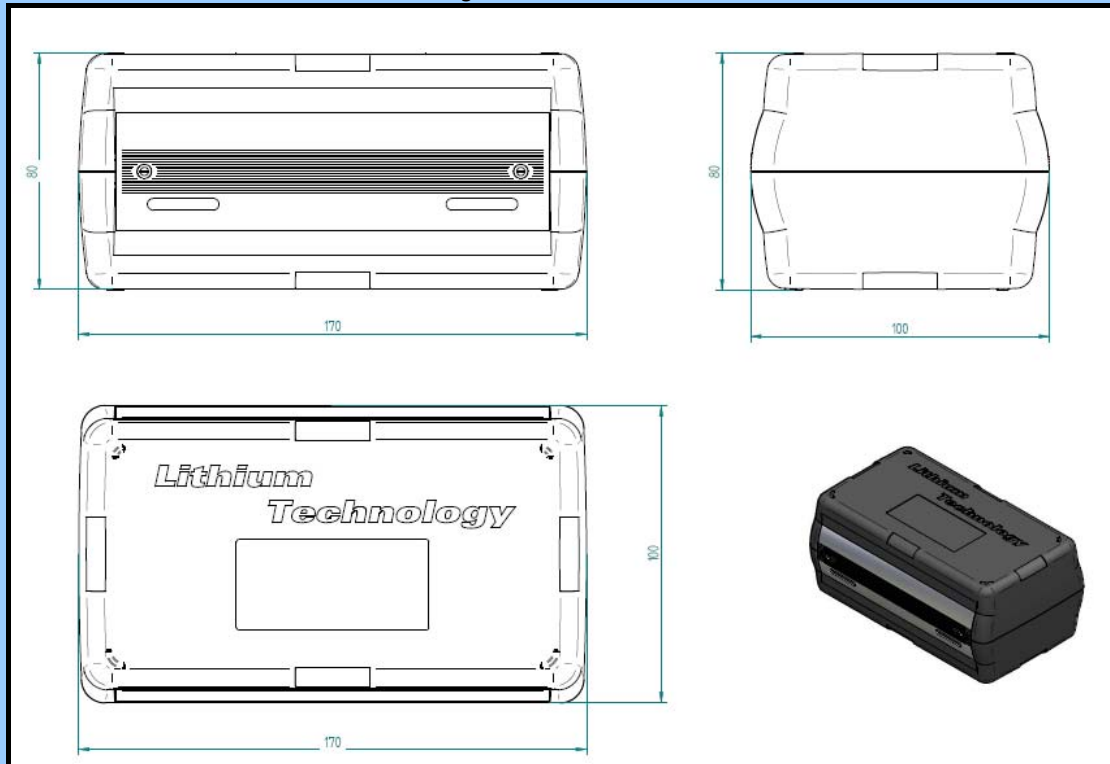


Cycle Life (I) : Capacity Retention

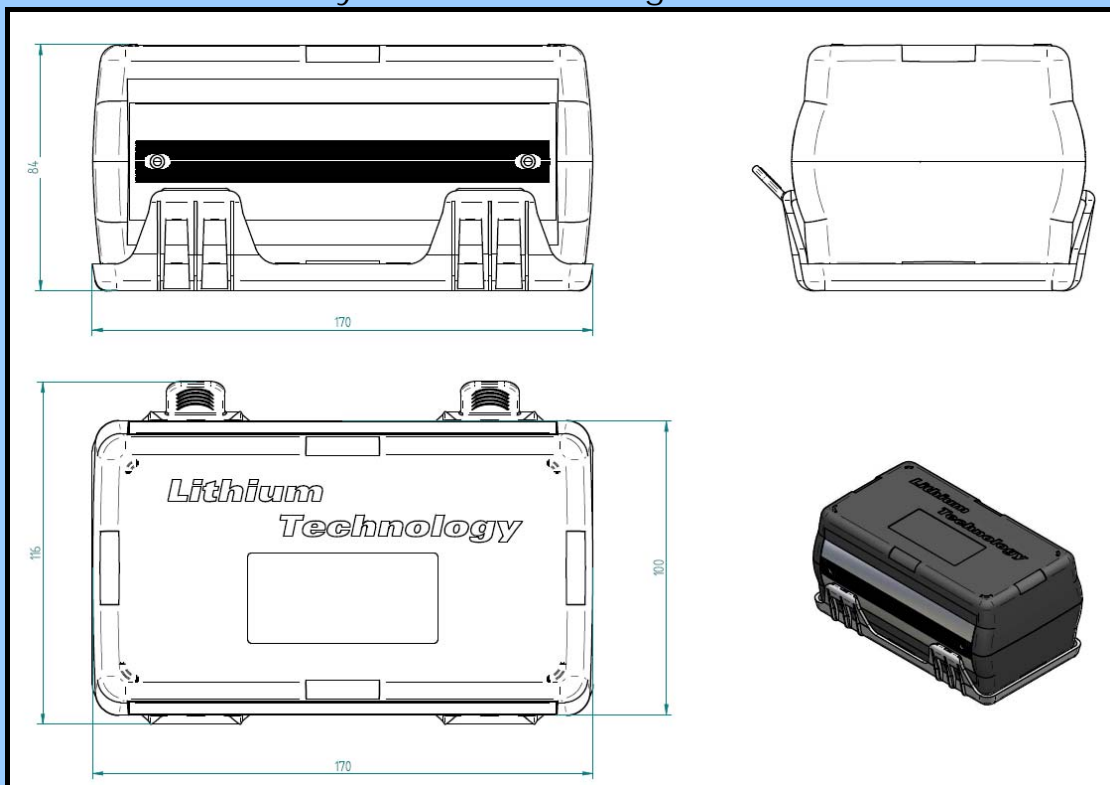


Mechanical specifications

Battery Box Dimensions



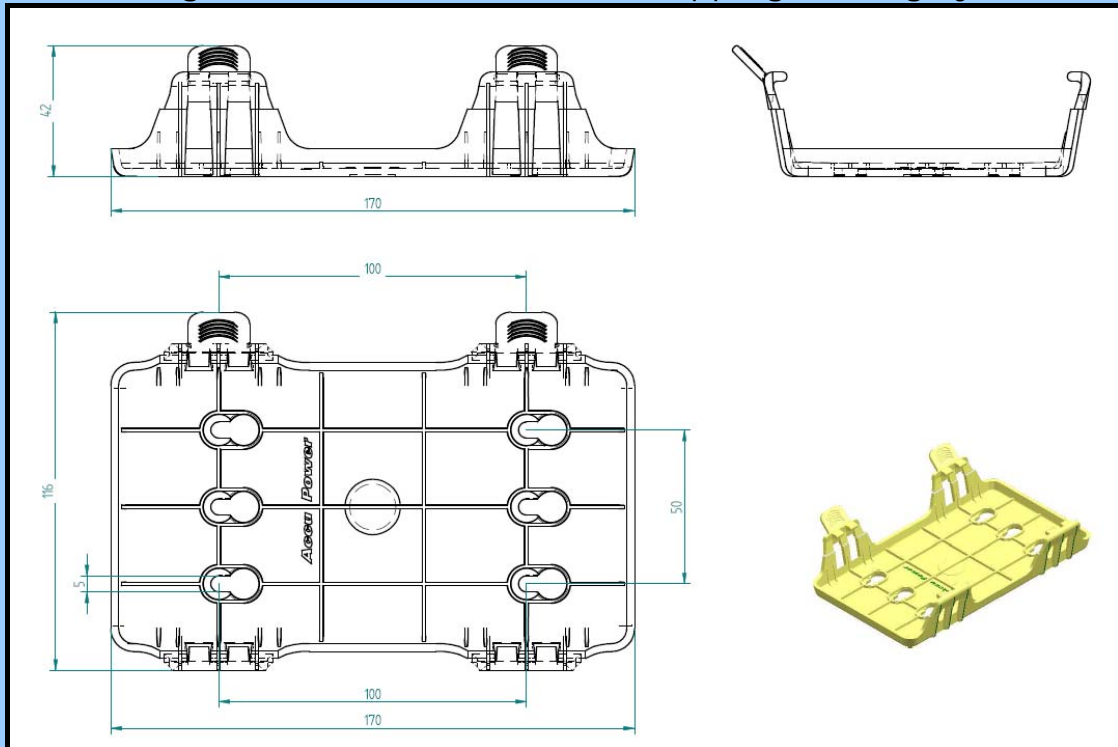
Battery Box with Holding down device



The Battery Box is fabricated from a durable Plastic material for optimal resistance to shock, vibration and resistance to mechanical stress. robust construction, snap-fit screwless assembly

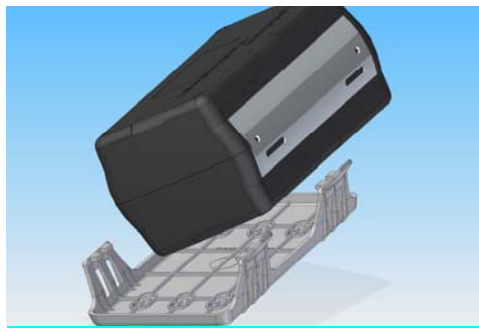
OEM / ODM service & customized logo available

Holding down device work with snapping locking-system



OEM / ODM service & customized logo available

the pictures show how to fixing the battery on holder



1



2



3



4

AccuPower is offering an OEM/ODM service - where customers can customize their own design.